

2020 PSME Summer Newsletter

2020 PSME Board Members

President, Workshop Chair

Mary Beth Morrison,
mbkmartist312@gmail.com

**Vice President/IAPS Representative/
Boothbay Retreat/Librarian**

Ruth Van Dine, ruth@vandinedesign.com

Treasurer

Sara Ostrov, sarapots626@gmail.com

Recording Secretary
Norma Johnsen, drhulga@yahoo.com

Membership Chair

Fran Townsend, ftownsend0908@gmail.com

Hospitality Chair

Jerri Whitman, jerriwhitmanstudio@gmail.com

Newsletter/Email Correspondence

Mary Barrett jinspec@maine.rr.com

Website and Social Media Administrator

Terrilynn Dubreuil, travelingartista@gmail.com

Workshop, and Member Show CoChair

Claudette Gamache, claudettegamache@yahoo.com

Member Show CoChairs

Marijke Damrell, marijke.damrell@gmail.com

Cheryl Di Cara, cdicara62@gmail.com

**PSME 20th International Juried Exhibition
CoChair.**

Christina Davis, crisdavis12@gmail.com

www.pastelsocietyofmaine.org

PSME Welcomes New Members

Alessandra Page, Windham, ME;

Janet Macleod, Newburyport, MA;

Dorothy Winchell, Acton, ME;

Rosemary Roswell, Ruidoso Downs,

NM; **Leann Skalkos,** Hollis, NH



President's Greeting, June 2020

Hello, friends and artists,

We have experienced a season unlike any other – from March to June, with unexpected changes imposed on living habits and employments, all of us hopefully occupying in the safety of homes, creatively making ends meet, and working on artful endeavors. I wish you well in body and soul! I find it a pleasure to get out into the gardens, and to paint in the sunshine, thankful for what we have.

Our full slate of PSME activities for 2020 has been reduced with multiple postponements. At least we know we are not alone in this, as all societies are experiencing similar disappointments. Our **Signature Members Show** at the Coastal Maine Botanical Gardens is postponed to June, July, and August, 2021, while Maine rides out this summer's restrictions for travelers to Maine.

Signature Members may submit their themed paintings prepared for this year's show in 2021, regardless of the change in the Garden theme. A fresh Call to Artists will appear in January.

For the 2020 summer, except for the Lyn Asselta workshops, PSME programs and meetings are suspended. There have been inquiries for classes and instruction in pastel. If any members are doing online or actual pastel classes, and would like to promote them, please contact Terrilynn Dubreuil, our social media chair.

Lyn Asselta's workshops, August 24-28 at Ferry Beach Retreat Center in Saco, Me, have been modified to reflect Covid-19 safety precautions. Changes will be posted on the registration page of the PSME website and notification sent to all currently registered.

Our **PSME 20th International Juried Exhibition**, set for September 1-26 at the Roux and Cyr Gallery, Portland, ME, **will be held as an ONLINE VIRTUAL EXHIBITION**. Submissions are accepted online through ShowSubmit until the **extended deadline, of July 24th**. Our judge of selection, Lyn Asselta, will have results by mid August, when accepted artists will be notified, followed by award notifications on Sept 1st. We are working to create an online virtual show to be shared on the Pastel Society of Maine website, and on the PSME FaceBook pages, where it may be viewed in September.

A Christmas members show is planned for December at the Topsham Library. At this time we expect it to take place as a normally hung show. We hope to have a

day of activities and a reception in early December. A call to artists will be forthcoming in September.

Our PSME board of directors welcomes the input and feedback of every member. We are seeking several new chairpersons for 2021. Please be thinking about what you might bring to the organization – for everyone, there is a season of giving, and the Pastel Society of Maine has opportunities for 1 and 2 year service. Many tasks are single event, accomplished from home by computer, by mail, and telephone. Our meetings for the foreseeable future are through Zoom technology, so it's easier for us to participate. Contact a board member or myself anytime with your questions or comments.

- **Call for Membership Dues**
PSME dues are \$40 annually.
Renewals are due in January.

Dues enable members to receive the quarterly newsletter, membership in the International Association of Pastel Societies (IAPS), opportunity to accrue points toward a PSME Signature Member status, reduced application fees for shows & workshops, benefits of our website link, some art supply store discounts and the great fellowship of pastel artists!

You may pay dues through the website membership online service with a credit card, or send a check direct to the Membership Chair, Fran Townsend, 33 Westwood Acres Road, Richmond, ME 04357 ftownsend0908@gmail.com

If you are a new or renewing member, send your dues by check to Fran Townsend, membership chair. Please include the membership application which can be downloaded from the PSME website. This will ensure that we have your latest address, phone number, email address and personal website (if applicable). Thank you for paying dues in a timely fashion! It helps keep our records current.

Member News

From **Terri Brooks**:

“Hey PSME members. Here’s what I have been up to during covid19 time out. As you may be aware, I love to paint people in inner tubes. I have done many paintings on that subject, so the bored me, dug deep into my picture files and worked up a series that I call, “The Inner Tube Ballet” all of people mostly women and girls, who have their inner tubes around them like giant, luminous tutus. I have ten so far. That may be enough. Or not.”

Cathy Howe has some very exciting news!!!

“My husband and I made an offer on a house in York and they accepted it!!! Can’t wait..looks like August or September we will be residents of Maine I really want to become involved in PSME !”

Claudette Gamache has a painting in the Connecticut Pastel Society Juried Member Show and one in the Pastel Society of Cape Cod International Juried Show.

Claudette will be teaching an online 4 week one hour class through the LaRomita Art School in Italy. The title is the “Journey into our Inner Artist”. The four (1 hr) sessions will incorporate visual storytelling, drawing and introduce tools to journey deeper into one’s creative self. Examples will be given and encourage everyone to work on their own before the following session.

A demonstration encompassing prior classes will be given at the last session. For further information please contact Claudette at

claudettegamache@yahoo.com or 207 389-2513 or 207 841- 3820.

Paula Fraser has been working with The New Hampshire Library Arts Center in Newport NH, to host the PSAC Member Show

With over 40 artists and 80+ paintings, Paula thinks that there may be some PSME members.

FMI: Online PASTEL SOCIETY of NEW HAMPSHIRE: Group Exhibition

Thursday, June 19· 11:00am – 4:00pm
Weekly on Thursday, until Jul 31, 2020

[Library Arts Center](#)

58 Main St, Newport, NH 03773, USA

Check out what your fellow artists are doing.

Andrew Anderson-Bell's painting "Autumn Brilliance" has been accepted into the Connecticut Pastel Society **2020 Purely Pastel Online Juried Member Show**. The show will be live starting June 1st at <http://www.ctpastelsociety.org> .



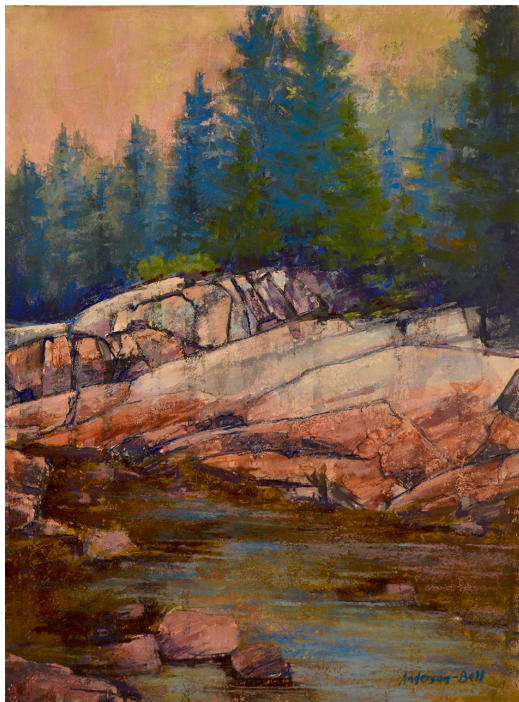
Autumn Brilliance

Andrew's painting "Morning Light" has been juried into the **Copley Society Regional Pastel Show**.

The show will be on view from June 4th - July 16th at <http://www.copleysociety.org>.



Calm Haze



Morning Light

In addition, Andrew's painting "Calm Haze" has been juried into the Pastel Painters Society of Cape Cod annual exhibition **For Pastels Only On Cape Cod 2020**.

The exhibit will be on their website <http://www.PPSCC.org> beginning June 21st.

From **Terrilynn Dubreuil**:



Painting by Terrilynn Dubreuil

Since the voluntary isolation started in response to COVID-19, I have been busier than ever! Finally I got the chance to do some things I've wanted to do for years: create a new FASO

website (from which I can sell directly), create some teaching videos for YouTube, and paint more. At first I started framing but then I realized "None of the galleries are open! And the shows are cancelled or postponed." So I returned to painting. A workshop I was to have presented for the Appalachian Pastel Society is postponed until September (hopefully). Also, my first experience teaching a Virtual Class! We used Zoom and, although there was a good learning curve, we pulled it off well. I had a facilitator and that helped a lot. I am now involved in a group of Pastel Teachers Teaching Online. We meet weekly and discuss ways to improve our online teaching. It can be done! It's been a challenging couple of months, but I've learned a lot! Weekly Zoom gatherings with my Maine art peeps has been wonderful. Hope to see you all in August at the Asselta workshop! Here are my links of new stuff I've created:

<https://www.travelingartista.com/>

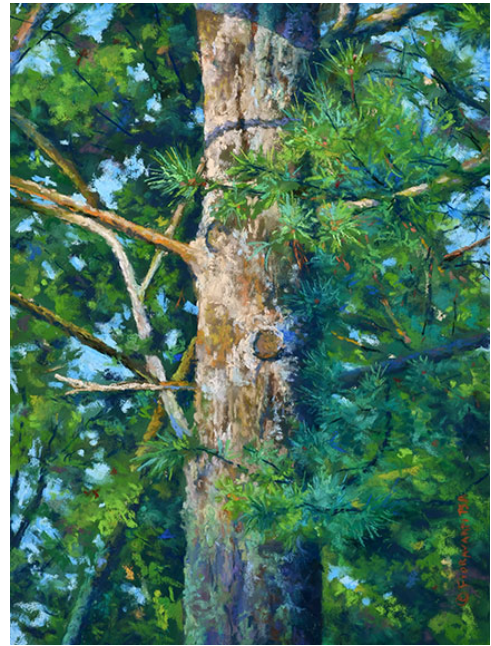
[https://www.youtube.com/user/](https://www.youtube.com/user/TravelingArtista)

[TravelingArtista](https://www.youtube.com/user/TravelingArtista)

Stay dusty, my friends!

Jeff Fioravanti

Unison Pastels has named Jeff an ambassador of pastels as part of the Associate Artist of Unison Colour program.



Jeff's pastel painting "It Pays Me No Mind" was juried into For Pastels Only an online exhibit sponsored by Pastel Painters Society of Cape Cod.



Jeff's pastel painting "Plume (Acadia)" was juried into the Connecticut Pastel Society's members online juried exhibition.



Jeff's pastel painting, *Outside My Window (The Ride Home)* will be part of an exhibit *Essays and Estuaries*, hosted by N.W. Barrett Gallery in Portsmouth, NH. Opening is slated for mid-June

Shuk Susan Lee shares news of her recent paintings



Reminiscence Of The Cape

1. "Fiesta in Panama" was juried into the Salmagundi Annual Member 2020 Online Exhibition.
2. "Boston at Blue Hour" and "Holiday Stroll" were juried into Art du Pastel en France's GIVERNY 2020 international online show. Furthermore, "Holiday Stroll" has won top 15% of Jury's favorite in BoldBrush Painting Competition in month of February.
3. "Reminiscence Of The Cape" has won *Jack Richeson & Company award* in the Connecticut Pastel Society member show.
4. "Banquet In Panama" has been accepted into the Connecticut Pastel Society Juried Member show.



Jeff's pastel painting "*The Chain (Life)*" is part of a Regional Juried Pastel Exhibit hosted by the Copley Society Art Gallery of Boston, Massachusetts. June 4 - July 16, 2020



2019 Best in Show – Lost in Thought by Tamara Amoroso

CMPS CALL FOR PASTEL ARTISTS

Marks of Distinction 2020

Approximately \$4000 in Awards!

DEADLINE: June 30, 2020

For further info visit cmpastels.org

To enter go to ShowSubmit.com

Online show only – International submissions welcome!

submitted by PSME Member Mary Ann Mullet

PSME Workshops /Classes



2020: LYN ASSELTA WORKSHOP

As of June 1, we are still a GO for these two amazing workshops.

Sign up ASAP!

EXPRESSIVE LANDSCAPE

StudioWorkshop

August 24 - 26, 2020

The three day Expressive Landscape studio workshop is an intensive (but fun!) exploration of “why” we choose to paint a subject and how this knowledge can, and should, affect everything from composition, to format, to color palette in our paintings. Lyn’s goal is to make you think more intentionally about the choices you make and to show you how those choices add up to a more expressive, unique landscape painting.

EXPRESSIVE LANDSCAPE Plein Air Workshop

August 27 - 28, 2020

Overwhelmed by the myriad choices the outdoors offers, artists can often become paralyzed before even beginning to paint? How do you decide what to leave in or to leave out? You may get caught up in so much detail that your paintings suffer. This 2-day plein air workshop will help you identify what you want to say and narrow down your focus for a strong, clear, unique voice.

CLICK HERE for the **REGISTRATION & INFORMATION** for both of the 2020 PSME Workshops with LYN ASSELTA:

<https://www.pastelsocietyofmaine.org/workshops>

Attendees safety and health are priority. The meeting room will be well-spaced with a minimum of 6' between artists with doors open when possible to allow good air flow. Rooms are private and it's up to the individual if they want to share a room or not with a roommate. The dining hall is also spacious. Ferry Beach Retreat & Conference Center is a beautiful location on a private area of Saco Beach.

PSME Facebook Page PSME Website Images

A reeminder to PSME Members:
We are always looking for **high definition images of new artwork**, to share on social media (the Website and Facebook).

E-mail good quality photos, with your name, title, size, and a short caption explaining your process or experience creating the work.

Email to travelingartista@gmail.com.
Put "PSME Art - Your Name" in the subject line and send the link to your website so we can connect them.

Group Painting Opportunities

Paint Outs

PSME has joined PAPME for Paint Outs.

Any painter is welcome to come paint with PAPME. Just contact the email below and they will let you know where they will be painting.

cmcintyrepaintings@gmail.com

Southern Maine Members can email Corinne McIntyre, opstudio@roadrunner.com to join the email list for paint outs. Just let her know who you are and where you are, and you can let everyone know where you will be painting.

Kennebunk Area Open Studio
Has Evolved into a
"Zoom Open Studio"
with
Art Discussions, Critiques and
Challenges"
Fridays 10am
Welcomes all media.

The Kennebunk Friday am open studio was unable to continue meeting when the pandemic came to Maine. Sara Ostrov suggested we try to meet weekly on Zoom. We would be able to discuss what we were working on and possibly provide suggestions or gentle critiques. Artists from distances too far to travel to Kennebunk were now able to join the group. Participants join the group from as faraway as Florida and North Carolina. During the meetings, the subjects of motivation and the trying of something new were frequent topics. Someone suggested a challenge for the following week a... famous still life. The response was amazing and fun. The next week was 'self portrait' then 'night scene'.



Famous Still Life Challenge

We are currently reclaiming some of our most disappointing past works taking “before” and “after” photos and sharing the “do over” decisions and methods with our group.

Items For Sale

For sale - Set of 24 powdered pigments used in egg tempera, etc. in 2oz. jars. A list of colors available. Price negotiable. Email janefrost12@gmail.com



Sara's Before



Sara's After

If interested in joining this group, email Sara Ostrov at sarapots626@gmail.com and she will email you the link to the meeting.

