

2020 PSME Fall Newsletter

2020 PSME Board Members

President, Workshop Chair
Mary Beth Morrison,
mbkartist312@gmail.com

**Vice President/IAPS Representative/
Boothbay Retreat/Librarian**
Ruth Van Dine, ruth@vandinedesign.com

Treasurer
Sara Ostrov, sarapots626@gmail.com

Recording Secretary
Norma Johnsen, drhulga@yahoo.com

Membership Chair
Fran Townsend, ftownsend0908@gmail.com

Hospitality Chair
Jerri Whitman, jerr whitmanstudio@gmail.com

Newsletter/Email Correspondence
Mary Barrett jinspec@maine.rr.com

Website and Social Media Administrator
Terrilynn Dubreuil, travelingartista@gmail.com.

Workshop, and Member Show CoChair
Claudette Gamache, claudettegamache@yahoo.com

Member Show CoChairs
Marijke Damrell, marijke.damrell@gmail.com
Cheryl Di Cara cdicara62@gmail.com

**PSME 20th International Juried Exhibition
CoChair.**
Christina Davis, crisdavis12@gmail.com

www.pastelsocietyofmaine.org

PSME Welcomes New Member

Susan Kerrigan, Cohasset MA

President's Message September, 2020



"Bridge at Vaughn Woods", MB Morrison Pastel

Hello, Artists, and Friends,
At this writing the fall air is coming -drier, crisper, cooler. It just says "plein air"! I hope some of you are able to get out and enjoy it.
After many disappointing deferments of our activities this year, we realized a plein air Expressive Landscapes Pastel Workshop with Lyn Asselta at Ferry Beach Conference Center in Saco, at end of August, for a dozen students. "Covid Cautious" with masks, washing regimen, and social distancing. All group meetings were conducted outside. Painting subjects were the beach, the woods, the marsh and putting cottages or buildings into the landscape. It was dynamic with Lyn's insightful teaching and practical guidelines. Personally, it was so good to see people and paint together, to chat in a relaxed manner, and to set painting goals and have critique.

The virtual PSME 20th International Juried Exhibition is available on the website www.pastelsocietyofmaine.org September 1st, thanks to the work that Terrilynn Dubreuil put in to create a platform for your viewing. Here are some statistics:

Pieces submitted -268, by 106 artists. 43 PSME members, 63 non member artists. Pieces chosen for the show – 100, representing 90 artists. They are from Russia, Asia, Britain, and around the US. We awarded 14 prizes totaling over \$6,000.00, including cash, merchandise and monetary donations, plus 3 honorable mentions.

The memory of Anne Allaire is honored with an anonymously donated award, and her family are offering an estate painting for sale to benefit the PSME. Many award recipients have written to thank PSME and our sponsors for their awards and the work of the show. It's all for you, artists! Like voting, it's your privilege to take advantage of the opportunities the PSME offers.

It's a learning curve, to mount a virtual show. Yet we are pleased to present a diverse show of fine pastel paintings. Thanks to each of you who supported PSME with your submissions! Thanks also to Lyn Asselta for her great work as juror and judge, and to Joe Baker and Show Submit, for his many helps and well oiled submission service.

Our annual board meeting in late fall will formalize plans for the coming year's events. We welcome interested new persons into the board mix, needing to fill a few positions. Consider serving a year with the PSME. Most of our work is by phone or computer, as are meetings until things change. We trust the new year will allow us to conduct business more freely, mounting exciting shows, inviting guest

artist programs, and trying a virtual approach in attempts to stay connected.

Though I prefer a well presented actual art show, and gathering together for meetings, we will use what means are available when it can't be in person. Watch for details for a virtual members show in December, in lieu of having one at the Topsham Library. I hope to see you all submit a piece for the show. No delivery, no framing necessary, unless your work finds a buyer.

Thanks to the PSME folks who have stayed faithful to 'educating the public in the medium of pastel', and 'promoting our members work'. When you offer support to each other, you support the organization!

Your unique life is your one gift in this world. Creativity is kindled as we see each other's lives play out.

As a resource, I hope the PSME continues to be relevant in your artistic life.

May you seek and express from your heart and soul.

Mary Beth Morrison

Board Vacancies Available

The PSME Board of 2020 has a few vacancies and is looking to the membership to help fill them. Present technology allows members who live in rural areas and other states to participate on our board. Most of our business affairs are conducted through email and Zoom. There are only four board meetings scheduled during the year. Meetings can be participated in via phone or computer.

PSME Board Positions Available:

Nominations Chair

Educational Programs Chair & Co-Chair

Pulic Relations Chair

Exhibit Co-Chairperson (new)

Treasurer (available 2022)

Member News

Polly Cain has 8 nautical paintings on exhibit at the New Hampshire Boat Museum(NHBM) located in Wolfeboro, NH.



Painting by Polly Cain



Painting by Polly Cain



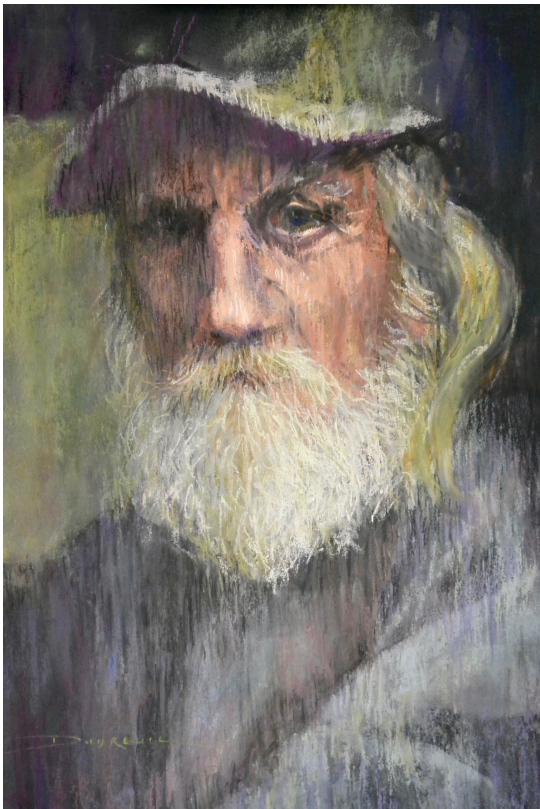
Painting by Polly Cain

Lee Skalkos has had her pastel entitled "Merchant Barn" accepted into the Cape Cod Pastel Society Show last month.

Terrilynn Dubreuil reports, "I'm on the road again between NC and ME and travel along with half my studio includes my AudioVisual equipment so (yes

hence my "Traveling Artista" moniker, plus no one can spell my name!). In my studio now I can continue making videos wherever I am. It's a new development.

Since Covid shut us down, I have been involved in a growing group of Pastel Artists Teaching Online. We share ideas and experiences with equipment, virtual teaching, and just plain support during these crazy times. Many of the well-known pastel instructors are now involved. It is an exciting time of adjustment with a world-wide reach. Also, thanks to Covid (yes, there have been some positive aspects to this pandemic), many of us have had a greater opportunity to enter more exhibits.



Painting by Terrilynn Dubreuil

No paintings to frame and ship and worry about .. just the uploaded photos!

For me, this has allowed me to be accepted into 5 international exhibits and I have become juried into - SO exciting - the PSA as an Associate Member. A good start. I am feeling so blessed. Sometimes I'm surprised as to which painting is accepted and which are not, but the important thing is to not become discouraged and to just keep submitting. And above all KEEP PAINTING!

Diana Rogers received the First Place Award for Abstract during the Bold Brush June 2020 National Competition for her painting "Watershed Moment." This work is part of her new Earth Day series, a project to celebrate the gifts of nature and call attention to the places we need to work hard to protect before they are gone. Her work "Nature and the Path Forward" received the Special **Recognition Art Award** as part of The Spirit of Resilience Exhibition sponsored by Manhattan Arts International.



"Watershed Moment" by Diane Rogers

Carol Ast and Barbara Vanderbilt

will be having a two-person exhibit at River Arts Gallery in their new space at 36 Elm Street Plaza, Damariscotta.



"Campobello Lookout" by Barbara Vanderbilt

The name of the show is "Down East Meets South West" and runs from September 24 - October 7.



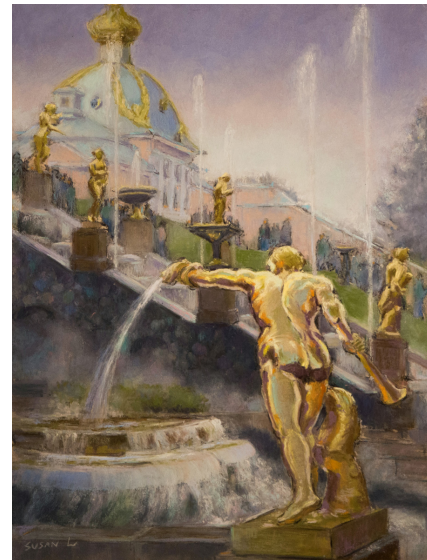
"Arroyo" by Carol Ast

Shuk Susan Lee shares the news of her recent pastel paintings.

1. "Fiesta in Panama" was juried into 107th Allied Artists of America Annual Exhibition, PSNC's 4th "Pure Color" International Juried online show, 6th Annual Adirondack National Pastel Online Exhibition, and Great Lake Pastel Society's National Juried show.

2. "Holiday Stroll" was also juried into the 6th Annual Adirondack National Pastel Online Exhibition.

3. "In the Midst of Peterhof" was juried into the Central Mass Pastel Society's "Mark Of Distinction" , as well as PSSC's 2nd "Make your Mark" International Juried show .



"In the Midst of Peterhof"

4. "A Day at St Petersburg" was juried into the PSME's "Pastel Only" 20th International Juried online Exhibition.

5. "JinLi Night Market" and "Waterfire Night" were juried into the Cape Cod Art Center's "National" Online Exhibition.

6. "Unveiling The Morn" and "Twilight Blues" were juried into Salmagundi Club's Moonrise/ Sunrise exhibition. Show is on view from 8/31-9/18.

7. "Twilight Blues" won top 15% Favorites at the Boldbrush painting competition for the month of July.



"Twilight Blues"



"Unveiling The Morn"

PSME Lending Library

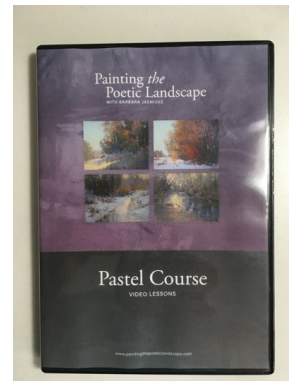
One of the benefits of PSME membership is your eligibility to borrow books and DVDs from the PSME Lending Library. Information of our collection is found on our website www.pastelsocietyofmaine.org/lending-library. In order to access lending privileges, your membership must be current and you must pay a

one-time registration fee of **\$10.00** and fill out request form from website.

Ruth Van Dine, Librarian

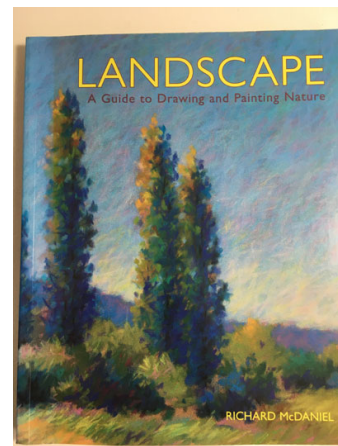
Some of our collection:

Painting the Poetic Landscape with Barbara Jaenicke – DVD



Are you ready to move from simply replicating a landscape to creating more of a visual message? Painting the Poetic Landscape is a video-based online course that teaches the fundamentals of landscape painting.

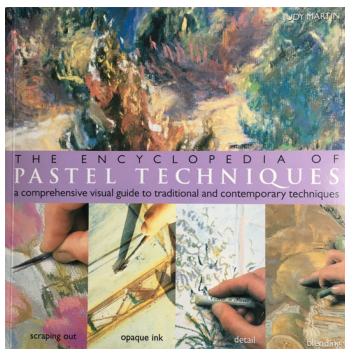
Landscape: a guide to drawing and painting nature by Richard McDaniel



Landscape is a compelling form of artistic expression long favored by professional artists and avid hobbyists alike. In its comprehensive approach

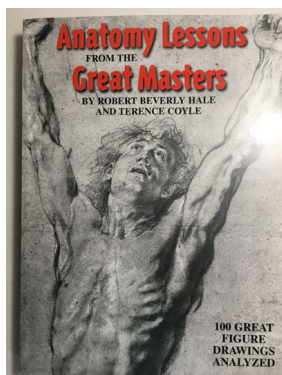
to the topic, this volume presents diverse ways to depict nature, with expert guidance offered for drawing with pencil, pen and ink, and charcoal, and painting with oils and pastels. With this single source at hand, readers are able to learn and hone skills in each medium, greatly enriching their experience of creating landscape art. Clear, illustrated step-by-step demonstrations are included throughout.

The Encyclopedia of Pastel Techniques: A Comprehensive Visual Guide to Traditional and Contemporary Techniques by Judy Martin



Through discussions of soft and hard pastels, oil pastels, water-soluble pastels, and pastel pencils, you'll discover the best medium for your project. Find out how to choose paper, apply color, and use fixatives. Hundreds of color photographs and illustrations, plus detailed instructions, show how to execute techniques.

Anatomy Lessons From the Great Masters by Robert Beverly Hale and Terence Coyle



This classic book, whose foremost author was one of the great artistic anatomy teachers of the twentieth century, is an invaluable instructor and reference guide for any professional, amateur, or student artist who depicts the human form.

Revealing the drawing principles behind one hundred inspiring masterpieces, the book presents work by Leonardo, Michelangelo, Rubens, Raphael, Titian, Rembrandt, and other greats. These superb portrayals of figures knew that the secret of drawing them was seeing how underlying bone and muscle structures mold the body's surface forms. Readers are shown how to learn from these great examples as the authors guide them through all the steps they would take in a life class or studio working with live models.

Flowers in Pastel by Margaret Evans



Margaret Evans shows how to blend and work with pastels, using their soft velvety tones and subtle changes of colour to reflect the beauty of flowers in the landscape, in gardens and in still life studies. Both drawing and painting techniques can be applied, creating stunning effects with light, shade, varied textures and detail.

PSME Facebook Page PSME Website

Back in Maine from North Carolina for many obligations (yes I lead a 2-place life!) including the Covid-distancing PSME workshop with Lyn Asselta. Mary Beth Morrison and I have been working tirelessly and with great care to prepare a safe workshop for those intrepid souls who are coming to this (basically) plein air workshop. Here's hoping for the best weather. Lyn is a wonderful teacher and we will share our experiences with everyone. Also we have been aiming toward more Virtual Presence on the internet - as that is what will keep us all "together" and mutually supportive during these times. An updated website, including a new Virtual Gallery page, in which the first show will be our 2020 International *Pastels Only* exhibit! Please share with everyone! Also in the works is a new YouTube channel on which we will have virtual presentations, workshops, demos, and other items. This will give us a greater reach for PSME worldwide! It's the present wave and we plan to ride it well.

If you have any thoughts or offers to help OR you want to help support these efforts by getting involved, please contact me: travelingartista@gmail.com
OR our new PSME email:
pastelsocietyofmaine@gmail.com

Group Painting Opportunities

Paint Outs

PSME has joined PAPME for Paint Outs. Any painter is welcome to come paint with PAPME. Just contact the email below and they will let you know where they will be painting.

cmcintyrepaintings@gmail.com

Southern Maine Members can email Corinne McIntyre, opstudio@roadrunner.com to join the email list for paint outs. Just let her know who you are and where you are, and you can let everyone know where you will be painting.

Kennebunk Area Open Studio Has Evolved into a " Zoom Open Studio" Art Discussions, Critiques and Challenges"

Fridays 10am Welcomes all media.

The Kennebunk Friday am open studio was unable to continue meeting when the pandemic came to Maine.

Sara Ostrov, PSME Treasurer, suggested we try to meet weekly on Zoom.

This would enable us to discuss what we were working on and possibly provide suggestions or gentle critiques. Artists from distances far from Kennebunk were now able to join the group.

The group continues to meet weekly and share their "challenge of the week" or whatever project or interest in the art world they are currently experiencing.

Membership Dues

**PSME dues are \$40 annually.
Renewals are due in January.**

PSME dues provide members with the quarterly newsletter, membership in the International Association of Pastel Societies (IAPS), opportunity to accrue points toward a PSME Signature Member status, reduced application fees for shows & workshops, benefits of our website link, some art supply store discounts and the great fellowship of pastel artists!

You may pay dues through the website membership online service with a credit card, or send a check direct to the Membership Chair, Fran Townsend, 33 Westwood Acres Road, Richmond, ME 04357 ftownsend0908@gmail.com

If you are a new or renewing member, send your dues by check to Fran Townsend, membership chair. Please include the membership application which can be downloaded from the PSME website. This will ensure that we have your latest address, phone number, email address and personal website (if applicable).

Thank you for paying dues in a timely fashion! It helps keep our records current.

PSME currently has eighty-one active members.

